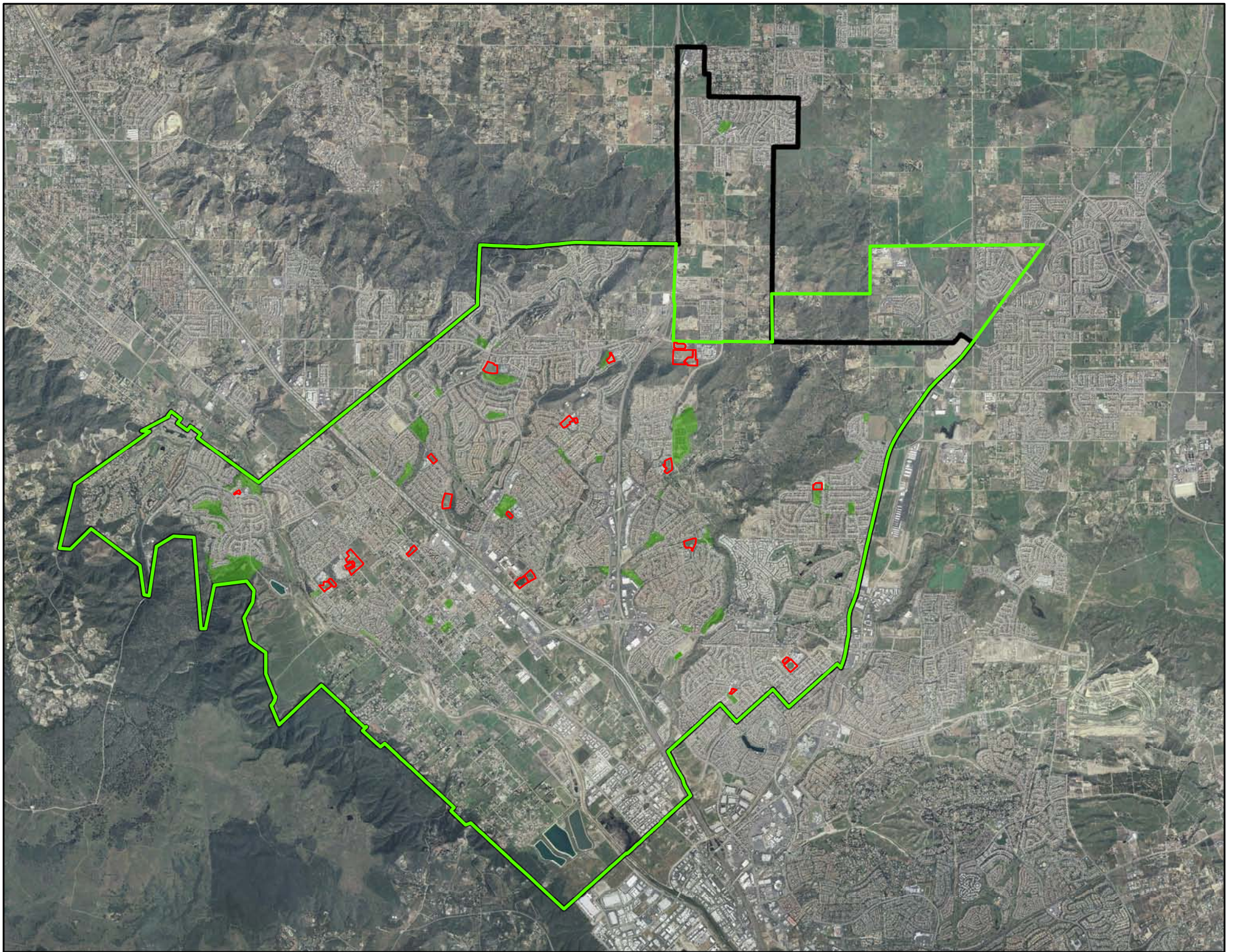




Appendix K:

**Parks & Open Space
Available on School Sites**



**Murrieta General Plan
School Parks**

Area	Acres	SchoolName
270,383.58	6.21	Murrieta Mesa High
681,377.54	15.64	Vista Murrieta High School
331,083.75	7.60	Calvary Murrieta Christian
39,174.62	0.90	Cole Canyon Elementary
553,619.50	12.71	Murrieta Valley High School
182,682.52	4.19	Creekside High School
77,031.82	1.77	Murrieta Valley High School
99,223.96	2.28	Creekside High School
130,024.61	2.98	The Oak Grove Center
125,096.32	2.87	E. Hale Curran Elementary
68,300.94	1.57	Shivela Middle
216,639.60	4.97	Murrieta Mesa High
261,460.16	6.00	Avaxat Elementary
341,743.73	7.85	Tovashal Elementary
115,206.01	2.64	Antelope Hills Elementary
316,816.83	7.27	Vista Murrieta High School
254,192.25	5.84	Rail Ranch Elementary
268,962.56	6.17	Alta Murrieta Elementary
154,834.74	3.55	Monte Vista Elementary
254,816.99	5.85	Warm Springs Middle
68,916.11	1.58	Warm Springs Middle
48,902.83	1.12	Daniel L. Buchanan Elementary
169,772.26	3.90	Vista Murrieta High School

Total	5,030,263.23	115.48
--------------	---------------------	---------------