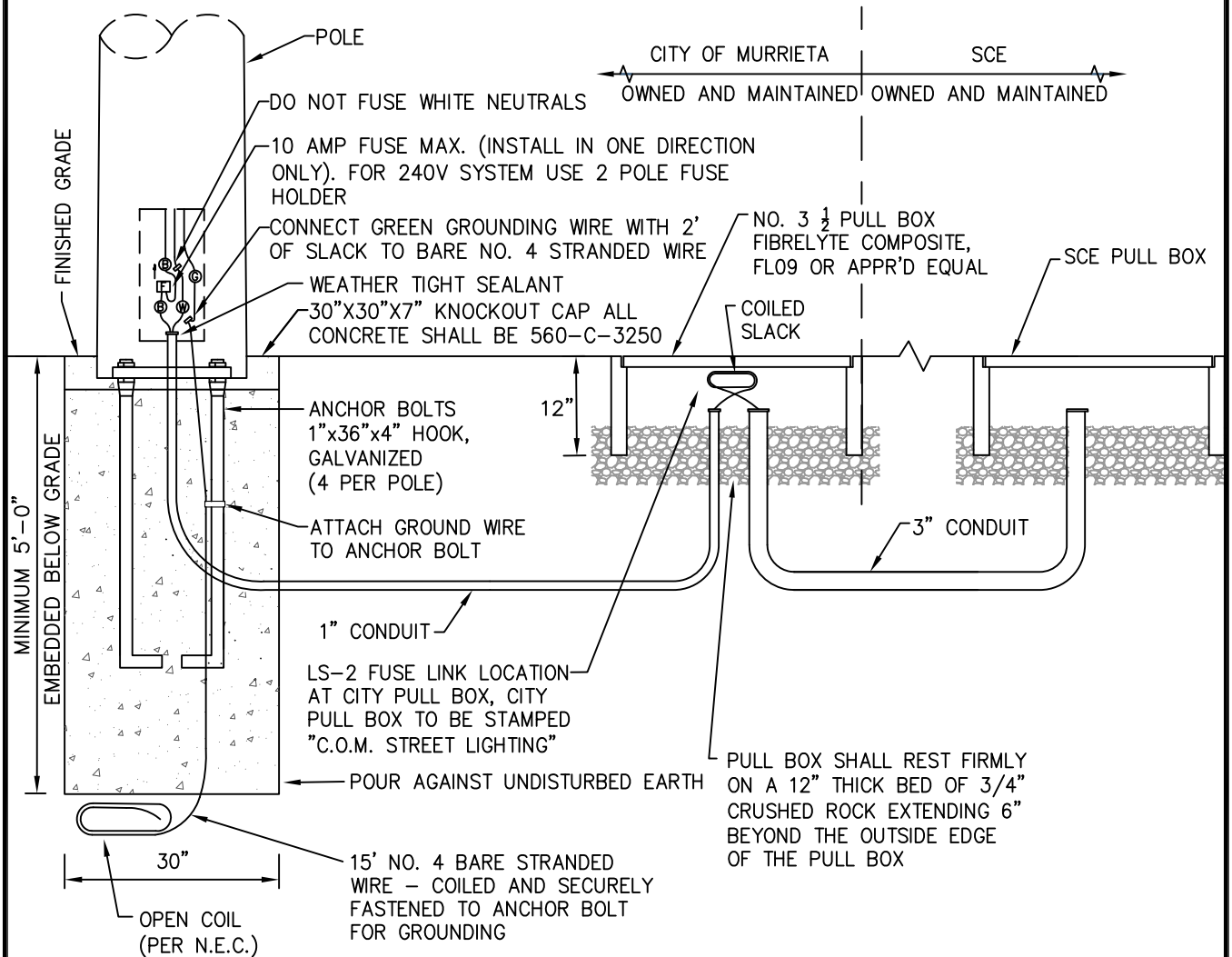



NOTES:

- 1) CONDUIT SHALL ENTER PULL BOX WITH A 90° SWEEP.
- 2) STREET LIGHT PULL BOX SHALL BE 5' MAX AWAY FROM STREET LIGHT POLE.
- 3) ALL CONDUIT SHALL BE SCHEDULE 80 PVC.
- 4) ALL HARDWARE TO BE STAINLESS STEEL.
- 5) ALL STEEL COMPONENTS GALVANIZED BEFORE FINISH PAINTED.
- 6) RECOMMENDED FOUNDATION DESIGN PER POLE MANUFACTURER SPECIFICATIONS.
- 7) STREET LIGHT WIRE INSULATION MARKINGS SHALL BE PER LATEST GREENBOOK SPECIFICATIONS.
- 8) CONDUCTORS SHALL BE TWO NO. 8 THWN WIRES WITHIN THE POLE FROM SPLICE POINT TO THE FIXTURE.
- 9) CONCRETE SHALL BE 560-C-3250.



	REVISIONS:	CITY OF MURRIETA	STD. NO. 620C
	DEPARTMENT OF PUBLIC WORKS		
	APPROVED BY:	xx/xx/2019 DATE	LS-2B STREET LIGHT CONNECTION DETAIL DRAFT
DIRECTOR OF PUBLIC WORKS ROBERT K. MOEHLING, PE			